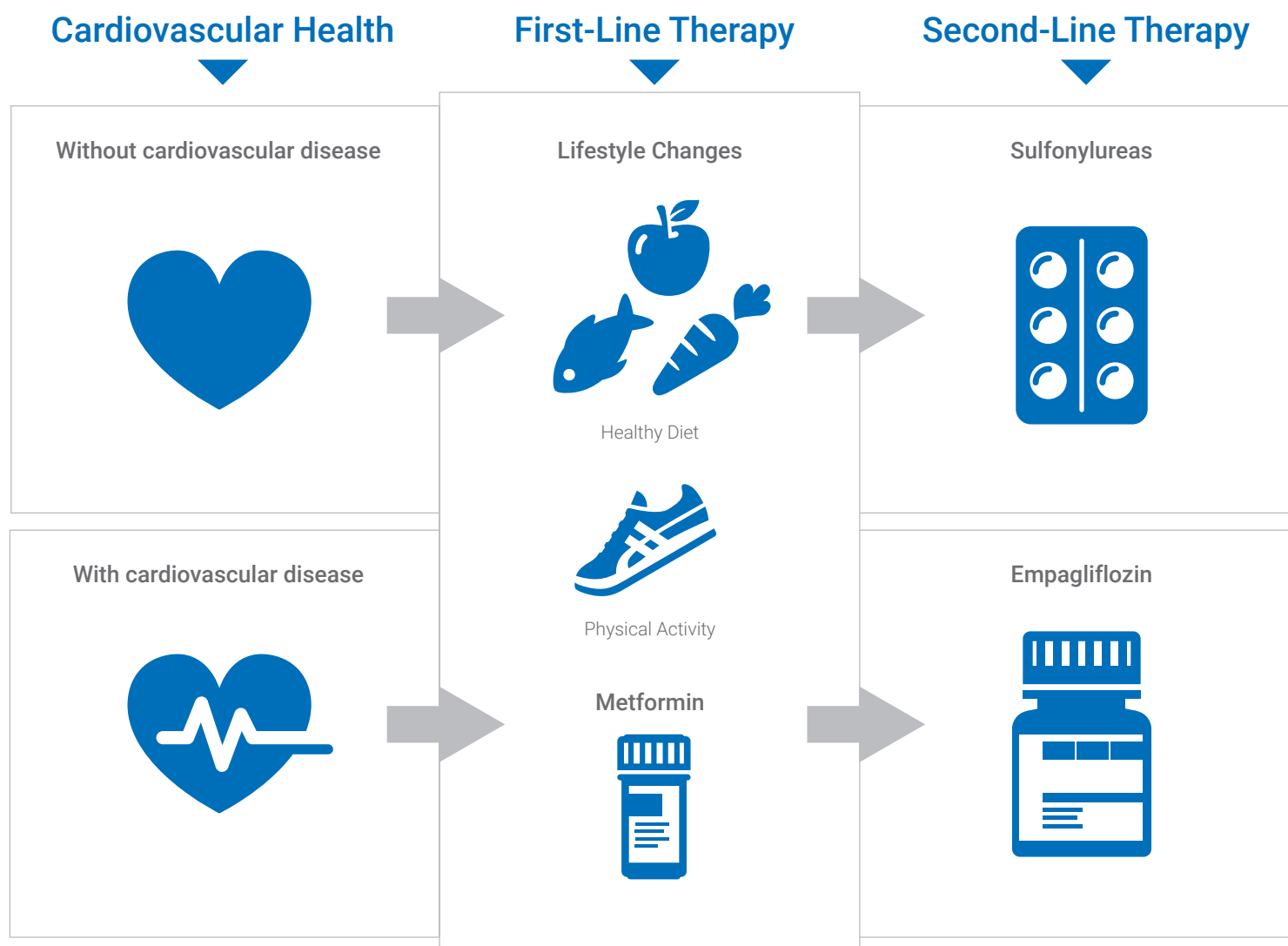


Second-Line Therapy for Type 2 Diabetes

cadth.ca/newdrugsT2DM

Treating type 2 diabetes usually begins with making lifestyle changes and, if needed, using oral or injectable drugs. Metformin is typically used as the first-line drug treatment. Once metformin is not effective enough, there are several different drug options that can be added for second-line treatment – but it's not always clear which ones work best for which patient. CADTH systematically reviewed the literature to determine the clinical effectiveness and cost-effectiveness of each drug class. Using these results, as well as results from a single-drug review and input from stakeholders, an expert committee developed updated recommendations to guide policy decisions.



These recommendations are based on a 2017 Therapeutic Review and a 2016 Common Drug Review performed by CADTH. This document is intended for information only. It does not take the place of advice from a physician or other qualified health care provider.

ABOUT CADTH

CADTH is an independent, not-for-profit organization responsible for providing Canada's health care decision-makers with objective evidence to help make informed decisions about the optimal use of drugs and medical devices in our health care system.

CADTH receives funding from Canada's federal, provincial, and territorial governments, with the exception of Quebec.

September 2017